



**VALENTUS**

# Valentus Compensation Plan

Valentus launched the ultimate compensation plan with a profit structure unparalleled by any pay plan in the direct marketing industry. Four top pay plan experts got together and equipped Valentus with 7 POWER BONUSES that can help you achieve the lifestyle of your dreams faster than was ever possible before.

**V  
A  
L  
E  
N  
T  
U  
S  
  
P  
L  
A  
N**

- 1) RETAIL COMMISSIONS 25%**
- 2) FAST START BONUS Up to \$100(USD)**
- 3) LEGACY CODED BONUS \$100(USD)  
Unblocked to Unlimited Levels**
- 4) DUAL TEAM COMMISSIONS Up To  
\$100,000(USD) Per Week**
- 5) DUAL TEAM MATCHING BONUS Seven  
Levels Starting at 20%**
- 6) 1% GLOBAL VOLUME SHARED  
ENROLLMENT POOL**
- 7) VEHICLE BONUS  
\$400 to \$3,000(USD) Monthly**

 **10k**  
Per Month Faster  
Than Any Plan!

**Web Site/Back Office - \$20.00 (USD) one-time activation fee. No annual fee.**

## Product Packs

Packages	Cost (USD)	Business Volume (BV)	Leadership Rank Benefit
<b>Basic</b>	1 box - \$59.95	50BV	Qualified as an <b>Independent Representative (IR)</b> .
<b>Starter</b>	3 boxes - \$129.95	100BV	Qualified as a <b>Gold IR</b> for the remainder of the month you join, PLUS the entire following month.
<b>Advanced</b>	6 boxes - \$199.95	150BV	Qualified as a <b>Platinum IR</b> for the remainder of the month you join, PLUS the entire following month.
<b>Business Builder</b>	16 boxes - \$499.95	400BV	<b>NOTE:</b> Automatically qualified as a <b>Ruby IR</b> , if you fulfill a 100BV Loyalty Purchase no later than the last day of the following month. Maintain a 100BV Loyalty Purchase for 6 consecutive months, or a 150BV Loyalty Purchase for 3 consecutive months, after which you will be automatically promoted as qualified <b>Emerald IR</b> .

### 1. Retail Commissions - Paid Weekly

25%. All orders from your web site count as personal BV towards your monthly requirement for commissions. To earn retail commissions you must maintain a minimum of 50BV personal volume each month (Monthly Loyalty Purchase optional).

### Valentus Preferred Customer Loyalty Reward Program

Preferred customers purchase at wholesale \$59.95 (USD) per box on a Monthly Loyalty Purchase. If they refer TWO Preferred Customers who set up and purchase their own Monthly Loyalty Purchase (product value equal to or greater than their own auto-delivery option), then the referring Preferred Customer's next month's scheduled auto-delivery Loyalty Purchase will be FREE (not including shipping costs and any applicable sales taxes charged to the Preferred Customer).

### 2. Fast Start (First Order) Bonus - Paid Weekly

Packages	Cost (USD)	BV	Fast Start Bonus	Legacy Bonus	Dual Team BV Allocation
<b>Basic</b>	1 box - \$59.95	50BV	\$20	n/a	20BV
<b>Starter</b>	3 boxes - \$129.95	100BV	\$40	n/a	40BV
<b>Advanced</b>	6 boxes - \$199.95	150BV	\$60	n/a	60BV
<b>Business Builder</b>	16 boxes - \$499.95	400BV	\$100	\$100	100BV

There is no differential upgrade. If your first order is the Basic, Starter or Advanced pack, you will be required to either purchase the Business Builder Pack should you decide to upgrade or

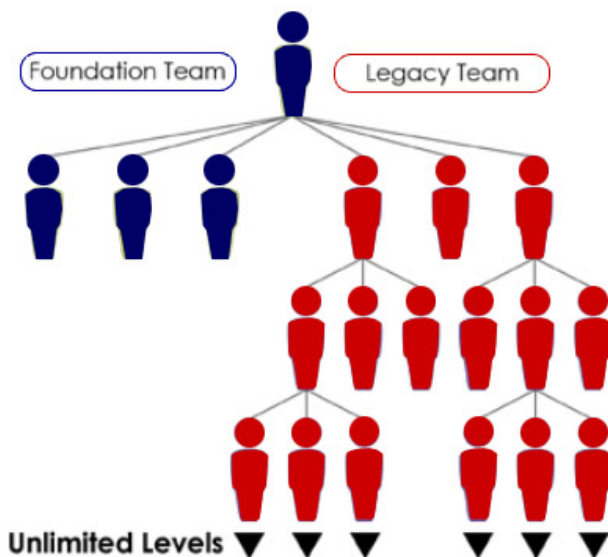
retail the equivalent amount of product using your IR retail website to qualify as a Ruby IR. Upgrade purchases are commissionable under the Fast Start Bonus. Subsequent whole packages are commissionable in the Dual Team Cycle structure.

### 3. Legacy Qualification Bonus - \$100.00 (USD) Paid Weekly

This \$100.00 (USD) bonus is paid on the successful qualification of a new **Ruby IR qualified** status who *either* purchases (or during the same enrollment month upgrades to) a \$499.95 (USD) Business Builder Pack, or who has have successfully sold through retail sales the equivalent 400BV amount in their first calendar month) and have an active 100BV Monthly Loyalty Purchase to maintain qualifications for this bonus.

Your first THREE sponsored and qualified Ruby IR's pays a \$100 Legacy Qualification Bonus to your first generation upline enroller who is a Legacy Qualified Ruby IR. After you have successfully achieved qualifying your first three Ruby IR's, beginning with your FOURTH personally qualified Ruby IR and onwards thereafter, the \$100 Legacy Qualification Bonus will be paid to you and on every qualified Ruby IR that you personally sponsor, and any additional Ruby IR's that are sponsored and qualified by your entire legacy organization down to unlimited levels, unblocked.

Each IR works to complete their Foundation Team. Each of the IR's they enroll in their Foundation Team are linked to you in your Legacy Team. This means that each IR in your Legacy Team must enroll 3 IR's that are in your Legacy Team **before** they start their own Legacy Team.



Each IR works to complete their Foundation Team. Each of the IR's they enroll and or qualify in their Foundation Team are linked to you in **your** Legacy Team. This means that each IR in your Legacy Team must enroll and qualify 3 IR's that will remain in your Legacy Team **before** they start their own Legacy Team subsequently thereafter.

#### 4. Dual Team Cycle Commissions - \$20.00 (USD) Per Cycle Paid Weekly

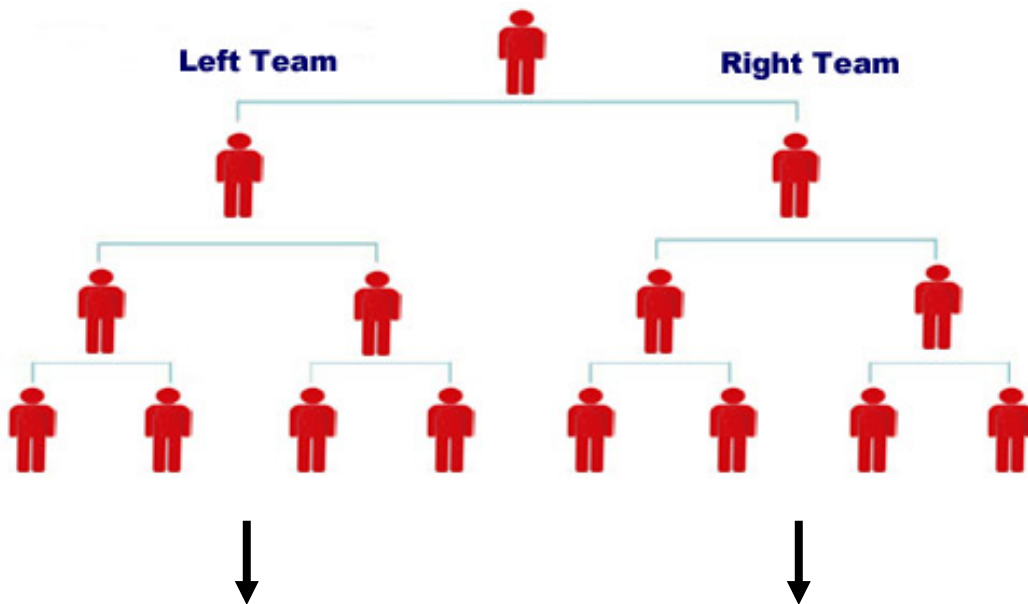
The Fast Start (First Order) Bonuses and Legacy Qualification Bonuses are paid out first before any BV is calculated in the Dual Team Cycle Commissions structure. The chart below shows the amount of BV from each of the Product Packages that is calculated in the Dual Team Commission Structure.

Packages	Dual Team BV Allocation (First Order Only)	Dual Team BV Allocation (Additional Orders)
Basic	20BV	50BV
Starter	40BV	100BV
Advanced	60BV	150BV
Business Builder	100BV	400BV

Any additional Product Packages or orders purchased after the First Order and monthly Loyalty Purchases are calculated in the Dual Team Commissions Structure using 100% of the BV value.

You cycle every time the computer sees 200BV on your stronger team and 100BV on your lesser team, with a weekly earnings potential of up to \$100,000 (USD). All Dual Team Commissions are subject to the IR reaching the required qualifications.

To qualify for Dual Team Cycle Commissions you are required to personally produce a Loyalty Purchase of 50BV or greater and sponsor a minimum of two (2) IR's – one placed on the left team and one placed on the right team – who each produce a Loyalty Purchase of 50BV or greater. If you do not satisfy the Dual Team Commissions qualification, but maintain a minimum 50BV in a Monthly Loyalty Purchase, the computer will automatically accumulate and store unpaid sales volumes in your team(s) for future commissions calculations (upon qualification).



**200BV****100BV****1 cycle = \$20.00 (USD)****Cycle Up To \$100,000 (USD) per week!****Rank Achievement Requirements**

<b>Leadership Rank Independent Representative (IR)</b>	<b>Monthly Loyalty Purchase BV Required</b>	<b>Minimum # of Personally Enrolled Rank IR's</b>	<b>Minimum Monthly Total BV Lesser Leg</b>	<b>Minimum Monthly Enroller Tree BV in EACH TEAM Leg</b>	<b>Monthly Loyalty BV Auto-Delivery Option</b>
Silver	<b>50BV</b>	2 IR's at 50BV	n/a	50	n/a
Gold	<b>100BV</b>	2 Silvers	500	50	100BV
Platinum	<b>100BV</b>	2 Golds	1,000	100	100BV
Ruby	<b>100BV</b>	2 Platins	2,000	200	100BV
Emerald	<b>100BV</b>	3 Rubies	5,000	500	100BV
Diamond	<b>100BV</b>	3 Emeralds	15,000	1,500	100BV
Double Diamond	<b>100BV</b>	2 Emeralds & 1 Diamond	30,000	3,000	100BV
Triple Diamond	<b>100BV</b>	1 Emerald & 2 Diamonds	100,000	10,000	100BV
Blue Diamond	<b>100BV</b>	3 Diamonds	250,000	25,000	100BV
Royal Diamond	<b>100BV</b>	4 Diamonds	500,000	50,000	100BV
Black Diamond	<b>100BV</b>	4 Diamonds	750,000	75,000	100BV
Crown Diamond	<b>100BV</b>	4 Diamonds	1,000,000	100,000	100BV
Crown Ambassador	<b>100BV</b>	4 Diamonds	1,500,000	150,000	100BV

## Dual Team Commissions, Maximum Cycle Earnings, Maximum Match Earnings and Car Bonus

Rank	Dual Team Income Cycle Value	Maximum # of Dual Team Cycles per week	Maximum Dual Team Cycle Commissions per week (USD)	Maximum Dual Team Match Bonus Commissions per week (USD)	Maximum Monthly Car Bonus (USD)
Silver	\$5	5	\$25	\$50	n/a
Gold	\$10	10	\$100	\$100	n/a
Platinum	\$10	20	\$200	\$250	n/a
Ruby	\$20	20	\$400	\$500	n/a
Emerald	\$20	50	\$1,000	\$1,000	n/a
Diamond	\$20	100	\$2,000	Unlimited	\$400
Double Diamond	\$20	200	\$4,000	Unlimited	\$800
Triple Diamond	\$20	400	\$8,000	Unlimited	\$1,000
Blue Diamond	\$20	800	\$16,000	Unlimited	\$1,500
Royal Diamond	\$20	1,600	\$32,000	Unlimited	\$2,000
Black Diamond	\$20	2,400	\$48,000	Unlimited	\$2,000
Crown Diamond	\$20	3,500	\$70,000	Unlimited	\$3,000
Crown Ambassador	\$20	5,000	\$100,000	Unlimited	\$3,000

## 5. SEVEN Levels Dual Team Matching Bonuses - Paid Weekly

This bonus is earned on the Dual Team Cycle Commissions earnings of all IR's in your personal enrollment tree, unlimited.

Level	Silver	Gold	Platinum	Ruby	Emerald	Diamond	Blue Diamond	Crown Diamond
1	10%	15%	15%	20%	20%	20%	20%	20%
2			10%	10%	15%	15%	15%	15%
3				5%	10%	10%	10%	10%
4				3%	5%	5%	5%	5%
5					3%	3%	3%	3%
6							3%	3%
7								2%

## 6. Enrollment Pool Bonus - Paid Monthly

Personally sponsor and qualify (PS&Q) 3 new Ruby IR's in one qualifying calendar month, and personally produce a Monthly Loyalty Purchase of 100BV for the same calendar month, and you will qualify to earn shares of up to 1% of total company sales for the same qualifying month. Share values will be determined by dividing the total number of all qualified IR's that have PS&Q at least 3 new Ruby IR's in the same qualifying month. The more sets of three (3) PS&Q Ruby IR's you produce, the more shares you earn (ex: 6 PS&Q Ruby IR's in one month equals 2 shares in the pool; 9 PS&Q Ruby IR's equals 3 shares, etc.) This bonus is calculated separately on each calendar month, and is paid by the 10<sup>th</sup> of the following month.

A \$499 Business Builder Pack enrollment counts towards one of the three PS&Q Ruby IR's required to get one share within this pool ONLY, when an IR orders a Business Builder Pack as their **first order**. Upgrades to a Business Builder Pack and/or Loyalty BV retail sales exceeding 400BV in future orders do not count towards earning a share in the Enrollment Bonus Pool, unless those purchases are made in the **same** enrollment month.

## 7. Vehicle Bonus - Paid Monthly

The Car Bonus is earned beginning at the rank of Diamond, and continues for ranks above, and is paid to the qualified IR beginning after two consecutive months of maintaining this status. For example, if you become a fully qualified Diamond in the month of April, and maintain the qualified rank of Diamond for the month of May, you will receive your first Car Bonus in the month of June.

## **Monthly Loyalty Purchase/BV Production Requirements**

To earn certain bonuses in the Valentus compensation plan, a Valentus IR is required to personally produce a minimum amount of monthly business volume (BV), either through the optional Loyalty Purchase monthly auto-delivery option, and/or sell product(s) through their Valentus IR website to a retail customer(s). An equivalent (or greater) amount of Valentus product BV under the IR's personal account is required to be achieved and maintained on a calendar month basis, in order to receive the corresponding commissionable entitlements:

1. 50BV per calendar month Loyalty Purchase order is required to earn monthly Retail Commissions.
2. 50BV per calendar month Loyalty Purchase order is required to earn the Fast Start (First Order) Bonus on all personally enrolled Basic, Starter and Advanced Packages. 100BV Loyalty Purchase order is required to earn Fast Start (First Order) Bonus on all personally enrolled Business Builder Packages.
3. 100BV per calendar month Loyalty Purchase order(s) is required to earn the Legacy Qualification Bonus.
4. 100BV per calendar month Loyalty Purchase order(s) is required to earn Dual Team Cycle Commissions for Gold IR's and above.
5. 100BV per calendar month Loyalty Purchase order(s) is required to earn Dual Team Matching Bonus.
6. 100BV per calendar month Loyalty Purchase order(s) is required to earn Enrollment Pool Bonus.
7. 100BV per calendar month Loyalty Purchase order(s) is required to earn Vehicle Bonus.

## **Bonus Schedule**

Weekly bonuses are paid every Friday, based on the sales of the previous week. Monthly bonuses are paid on the 10th of the following month, based on the sales of the previous month.

## **Flushing**

This is a non-flushing dual team plan. Any unused BV that was not eligible for qualification or used to calculate Dual Team Commissions will continue to accumulate in your left and right teams, and will be used in future sales cycles when the accumulation BV amounts and Dual Team qualifications are achieved. Unused BV that is retained in your left and right teams that



has not been utilized after 12 months of inactivity may be subject to a flushing revision, at Valentus Inc.'s discretion.

## **Rank Advancement**

Any rank you achieve in a given week will be activated and paid according to that rank the following week. Any unqualified rank, beginning from the rank of Diamond IR or above, who may have lost their active weekly or monthly Diamond IR or above qualification, will be granted a grace period of 30 days in order to re-qualify and retain their Diamond IR or above rank benefits.

## **Disclaimer**

Valentus is a direct-to-consumer organization that designs, manufactures and markets exclusive products. We don't believe in get rich quick programs. We believe in hard work, dedication, adding value and serving others. As stipulated by law, we cannot and do not make any guarantees about your ability to get results or earn any money with our ideas, information, tools, compensation systems or strategies. We don't know you and, besides, your results in business are up to you and solely determined by your efforts, resources, connections, dedication and application. Nothing in this document or any of our websites is a promise or guarantee of results or future earnings, and we do not offer any legal, medical, tax or other professional advice. Any financial numbers referenced here, or on any of our websites, are simply of an educational nature describing how our programs work and should not be considered exact, actual or as a promise of potential earnings. All numbers are illustrative only. For any concerns beyond the scope of this document, we recommend you seek professional advice.