




COMPENSATION PLAN



December 2021 / USA



Valentus launched the ultimate compensation plan with a profit structure unparalleled by any pay plan in the direct marketing industry. Four top pay plan experts got together and equipped Valentus with **7 POWER BONUSES** that can help you achieve the lifestyle of your dreams *faster* than was ever possible before.



VALENTUS PLAN

- 1. Retail Profits and Commissions** 25–40% on wholesale to retail depending on pack size purchased.
 - If the sale is from sharing your website link, and they pay the full retail price, you make a 25% commission
 - If the sale is from hand-to-hand sales you can make a 25–40% profit.
- 2. Fast Start Bonus** Up to \$100 (USD)
- 3. Legacy Coded Bonus** \$100 (USD)
Unblocked to Unlimited Levels
- 4. Dual Team Commissions** Up to \$100,000 (USD) Per Week
- 5. Dual Team Matching Bonus** Seven Levels Starting at 20%
- 6. 1% Global Volume Shared Enrollment Pool**
- 7. Vehicle Bonus** \$400 to \$3,000 (USD) Monthly

Web Site/Back Office

\$20.00 (USD) One-time Activation Fee. *No annual fee*



PRODUCT PACKS

Packages	Cost (USD)	Qualifying Business Volume (BV)	Leadership Rank Benefit
Basic	1 box / \$59.95	50BV	Qualified as an Independent Representative (IR).
Starter	3 boxes / \$160.95	100BV	Qualified as a Gold IR for the remainder of the month you join, PLUS the entire following month.
Advanced	6 boxes / \$263.95	150BV	Qualified as a Platinum IR for the remainder of the month you join, PLUS the entire following month.
Business Builder	16 boxes / \$633.95	400BV	NOTE: Start your business as a qualified Ruby IR, if you fulfill 100BV no later than the last day of the following month. Maintain a 100BV for 6 consecutive months, or a 150BV for 3 consecutive months, after which you will be promoted as qualified Emerald IR.
Career Success	36 boxes / \$1,319.95	800BV	NOTE: Start your business as a qualified as an Emerald IR.

Disclaimer: Generating a meaningful compensation as an Independent Representative requires considerable time, effort, and commitment. This is not a rich quick program. There is no guarantee of financial success.

1. RETAIL PROFITS AND COMMISSIONS

All orders from your web site link sold at full retail count as personal BV towards your monthly requirement for commissions. To earn retail commissions you must maintain a minimum of 50BV personal volume each month.

When you sell wholesale to retail (hand to hand) you earn the difference in the mark up of what you paid to the price you sell it for.

As an example one product depending on the pack ranges from \$59.95 to \$36.66 for one unit. The suggested retail is \$79.95 you will earn between \$20 and \$44.

*This excludes paid shipping and taxes.

2. FAST START (First Order) Bonus—Paid Weekly

Packages	Cost (USD)	Qualifying BV	Fast Start Bonus	Legacy Bonus	Dual Team BV Allocation
Basic	1 box / \$59.95	50BV	\$20	n/a	20BV
Starter	3 boxes / \$160.95	100BV	\$40	n/a	40BV
Advanced	6 boxes / \$263.95	150BV	\$60	n/a	60BV
Business Builder	16 boxes / \$633.95	400BV	\$100	\$100	100BV
Career Success	36 boxes / \$1,319.95	800BV	\$200	\$100	100BV

If your First Order (Enrollment Order) is the Basic, Starter or Advanced Pack, you will qualify for the respective bonus listed in the above chart. Purchases after the first purchase are commissionable under the Fast Start Bonus. No additional FSB's apply to subsequent orders of the Basic, Starter, Advanced... With the exception of the Business Builder or the Career Success Pack.

To advance ranks, through purchasing, you will be required to purchase the Business Builder or Career Success Pack.

Business Builder Pack (BBP) Career Success Pack (CSP):

A \$100/\$200 Fast Start bonus is paid out on the first Business Builder/Career Success Pack purchased on an account. Once the \$100 is paid out, no other Fast Start Bonus' are paid out on an account. **No time-frame.*

Multi-Packs:

A Multi-Pack Fast Start Bonus is paid out "one-time" for any multi-pack...when the multi-pack is the "first order" on the account.

Basic = \$20

Starter = \$40

Advanced = \$60

Scenario A:

1st Order: Basic \$20

2nd Order: Basic \$0

3rd Order: Advanced \$0

4th Order: CSP \$200 or BBP \$100 (Done)

Scenario B:

1st Order: BBP \$100 / CSP \$200 (Done)

2nd Order: Basic \$0.





2. FAST START (Continued)

Wholesale Customer Program

Available on 1, 3, and 6 packs

Wholesale Customers go in your tree based on the setting of your Rotator (right or left). No \$20 membership fee. These are not IR's they are Customers. Every Customer order is paid out in fast start and binary/duel team as follows:

\$59.95 order—\$20 Fast Start

20 points binary/duel team – if in lesser leg this would equal an additional \$4 for a total of \$24 or approximately 40%. 50 points count towards total OV (organizational volume).

\$160.95 order—\$40 Fast Start

40 points binary/duel team – if in lesser leg this would equal an additional \$8 for a total of \$48 or approximately 30%. 100 points count towards total OV (organizational volume).

\$263.95 order—\$60 Fast Start

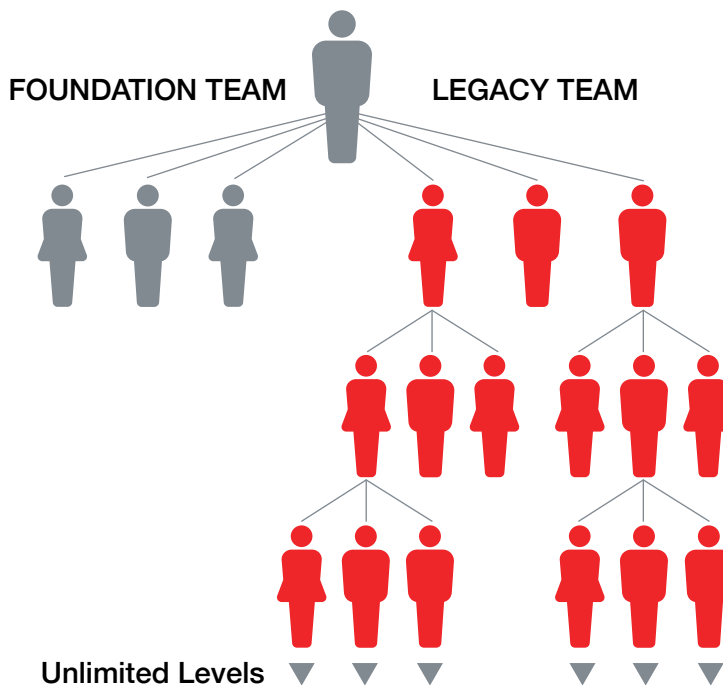
60 points binary/duel team – if in lesser leg this would equal an additional \$12 for a total of \$72 or approximately 30%. 150 points count towards total OV (organizational volume).

3. LEGACY-CODED QUALIFICATION BONUS – \$100

(USD) Paid Weekly

Your first THREE personally enrolled IR's:

- Who are qualified Ruby/Emerald IR's become your Foundation Team
- Pay a \$100 Legacy-Coded Bonus to your first generation upline enroller who is a Legacy
- Qualified, Ruby or Emerald IR, and who maintains an active monthly volume of 100BV.



Qualification:

- You have successfully built your Foundation Team
- You are a qualified Ruby or above
- Maintain 100BV monthly
- Starting with your FOURTH (personal) qualified Ruby/Emerald IR...you receive the \$100/\$200 Legacy Qualification Bonus for each enrollee....the enrollee is "Legacy- Coded" to you

Subsequently and UNLIMITED

You receive the first three qualified Ruby or Emerald IR's from each enrollee of your "Legacy-Coded" Reps, who in turn are coded to you, as are their first 3, and so on...UNLIMITED.

4. DUAL TEAM CYCLE COMMISSIONS – \$20.00

(USD) Per Cycle / Paid Weekly

The Fast Start (First Order) Bonuses and Legacy Qualification Bonuses are paid out first before any BV is calculated in the Dual Team Cycle Commissions structure. The chart below shows the amount of BV from each of the Product Packages that is calculated in the Dual Team Commission Structure.

Packages	Dual Team BV Allocation (First Order Only)	Dual Team BV Allocation (Additional Orders)
Basic	20BV	50BV
Starter	40BV	100BV
Advanced	60BV	150BV
Business Builder	100BV	400BV
Career Success	100BV	500BV

Additional Product Packages/orders purchased after the First Order are calculated in the Dual Team Commissions Structure using 100% of the BV value.

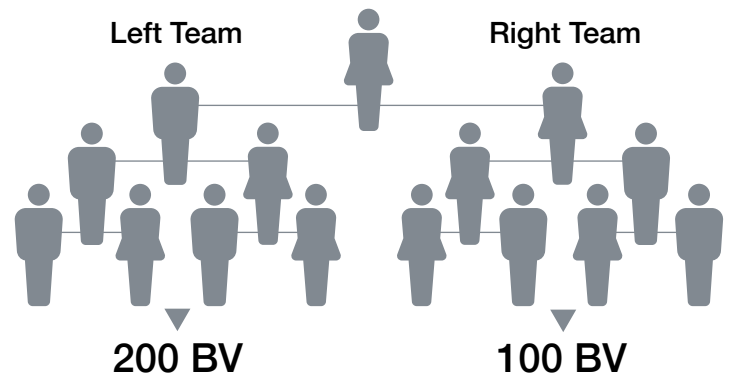
Qualification:

To qualify for Dual Team Cycle Commissions, requires 100BV (Personal) or greater and sponsor a minimum of two (2) IR's – one placed on the left team and one placed on the right team – who each produce 50BV or greater. If you do not satisfy the Dual Team Commissions qualification, but maintain a minimum 50BV, the computer will automatically accumulate and store unpaid sales volumes in your team(s) for future commissions calculations (upon qualification).

Each week that you qualify to cycle, all of the volume in your lesser leg matches your strong leg (100 to 200). The Volume for all available cycles is deducted. Next, your rank determines the maximum number cycles you can be paid on each week, and the income of each cycle. If there 5 are more cycles worth of Volume on your account than your rank's cycle cap, the Volume for ALL cycles is deducted, and you will be paid on your rank's cycle cap. Any remaining Volume will be carried over to the next pay period.

RANK CYCLE CAPS

Each week you cycle, your lesser leg matches your strong leg (100 to 200). All of the Volume for all of the cycles available on your account is deducted. If your account has the Volume for more cycles than your rank's cycle cap, you will be paid on your rank's maximum number of cycles, but the Volume for all cycles will be deducted. Any remaining volume will carry over to the next pay period.



1 Cycle = \$20.00 (USD)

Cycle Up To \$100,000 (USD) per week!

4. DUAL TEAM CYCLE COMMISSIONS (Continued)

Rank Achievement Requirements

Leadership Rank Independent Representative (IR)	Monthly BV Required	Minimum # of Personally Enrolled Rank IR's	Minimum Monthly Total BV Lesser Leg	Minimum Monthly Enroller Tree BV in EACH TEAM Leg	Monthly BV Auto-Delivery Option
Silver	50BV	2 IR's at 50BV	n/a	50	n/a
Gold	100BV	2 Silvers	500	50	40BV
Platinum	100BV	2 Golds	1,000	100	60BV
Ruby	100BV	2 Platitudes	2,000	200	100BV
Emerald	100BV	3 Rubies	5,000	500	100BV
Diamond	100BV	3 Emeralds	15,000	1,500	100BV
Double Diamond	100BV	2 Emeralds & 1 Diamond	30,000	3,000	100BV
Triple Diamond	100BV	1 Emerald & 2 Diamonds	100,000	10,000	100BV
Blue Diamond	100BV	3 Diamonds	250,000	25,000	100BV
Royal Diamond	100BV	4 Diamonds	500,000	50,000	100BV
Black Diamond	100BV	4 Diamonds	750,000	75,000	100BV
Crown Diamond	100BV	4 Diamonds	1,000,000	100,000	100BV
Crown Ambassador	100BV	4 Diamonds	1,500,000	150,000	100BV

As an Example: Diamond qualification = 100 Personal Business Volume, 3 personally enrolled Emeralds, 15,000+ BV in both legs of which 10% of the BV in each leg needs to be connected Enrollment Tree Business Volume.

4. DUAL TEAM CYCLE COMMISSIONS (Continued)

Dual Team Commissions, Maximum Cycle Earnings, Maximum Match Earnings and Car Bonus

Rank	Dual Team Income Cycle Value (USD)	Maximum # of Dual Team Cycles (per week)	Maximum Dual Team Cycle Commissions (per week / USD)	Maximum Dual Team Match Bonus Commissions (per week / USD)	Maximum Monthly Car Bonus (USD)
Silver	\$5	5	\$25	\$50	n/a
Gold	\$10	10	\$100	\$100	n/a
Platinum	\$10	20	\$200	\$250	n/a
Ruby	\$20	20	\$400	\$500	n/a
Emerald	\$20	50	\$1,000	\$1,000	n/a
Diamond	\$20	100	\$2,000	Unlimited	\$400
Double Diamond	\$20	200	\$4,000	Unlimited	\$800
Triple Diamond	\$20	400	\$8,000	Unlimited	\$1,000
Blue Diamond	\$20	800	\$16,000	Unlimited	\$1,500
Royal Diamond	\$20	1,600	\$32,000	Unlimited	\$2,000
Black Diamond	\$20	2,400	\$48,000	Unlimited	\$2,000
Crown Diamond	\$20	3,500	\$70,000	Unlimited	\$3,000
Crown Ambassador	\$20	5,000	\$100,000	Unlimited	\$3,000

5. SEVEN LEVELS DUAL TEAM MATCHING BONUSES

Paid Monthly

This bonus is earned on the Dual Team Cycle Commissions earnings of all IR's in your personal enrollment tree, unlimited.

Qualification:

- Maintain 100BV monthly

Level	Silver	Gold	Platinum	Ruby	Emerald	Diamond	Blue Diamond	Crown Diamond
1	10%	15%	15%	20%	20%	20%	20%	20%
2			10%	10%	15%	15%	15%	15%
3				5%	10%	10%	10%	10%
4				3%	5%	5%	5%	5%
5					3%	3%	3%	3%
6							3%	3%
7								2%

6. ENROLLMENT POOL BONUS

Paid Monthly

Qualification:

- Personally sponsor AND qualify (PS&Q) 3 new Ruby/Emerald IR's in the SAME calendar month
- Personally produce 100BV for the same calendar month
- Qualifies One (1) Share in the 1% Enrollment Pool

Share values will be determined by dividing the total number of all qualified IR's that have PS&Q at least 3 new Ruby or Emerald IR's in the same qualifying month. The more sets of three (3) PS&Q Ruby or Emerald IR's you produce, the more shares you earn (ex: 6 PS&Q Ruby IR's in one calendar month equals 2 shares in the pool; 9 PS&Q Ruby or Emerald IR's equals 3 shares, etc.) This bonus is calculated separately on each calendar month, and is paid by the 10th of the following month.

A \$632.95 Business Builder Pack or \$1,319.95 Career Success Pack enrollment counts towards one of the three PS&Q Ruby or Emerald IR's required to get one share within this pool ONLY, when an IR orders a Business Builder Pack or a Career Success Pack as their first order. Upgrades to a Business Builder Pack or a Career Success Pack and/or Loyalty BV retail sales exceeding 400BV in future orders do not count towards earning a share in the Enrollment Bonus Pool, unless those purchases are made in the same enrollment month.



7. VEHICLE BONUS Paid Monthly

The Car Bonus is earned beginning at the rank of Diamond, and continues for ranks above, and is paid to the qualified IR beginning after two consecutive months of maintaining this status. For example, if you become a fully qualified Diamond in the month of April, and maintain the qualified rank of Diamond for the month of May, you will receive your first Car Bonus in the month of June. Cars must be 2years old or newer.

Monthly BV Production Requirements

To earn certain bonuses in the Valentus compensation plan, a Valentus IR is required to personally produce a minimum amount of monthly business volume (BV), either through personal business volume, and/or selling product(s) through the Valentus IR website to a retail customer(s).

An equivalent (or greater) amount of Valentus product BV under the IR's personal account is required to be achieved and maintained on a calendar month basis, in order to receive the corresponding commissionable entitlements:

1. 50BV per calendar month is required to earn monthly Retail Commissions
2. 50BV per calendar month is required to earn the Fast Start (First Order) Bonus on all personally enrolled Basic, Starter and Advanced Packages. 100BV is required to earn Fast Start (First Order) Bonus on all personally enrolled Business Builder and Career Success Packages
3. 100BV per calendar month is required to earn the Legacy Qualification Bonus
4. 100BV per calendar month is required to earn Dual Team Cycle Commissions for Gold IR's and above
5. 100BV per calendar month required to earn Dual Team Matching Bonus
6. 100BV per calendar month is required to earn Enrollment Pool Bonus
7. 100BV per calendar month is required to earn Vehicle Bonus



Bonus Schedule

Weekly bonuses are paid every Friday, based on the sales of the previous week. Monthly bonuses are paid on the 10th of the following month, based on the sales of the previous month.

Flushing

This is a non-flushing dual team plan. Any unused BV that was not eligible for qualification or used to calculate Dual Team Commissions will continue to accumulate in your left and right teams, and will be used in future sales cycles when the accumulation BV amounts and Dual Team qualifications are achieved. Unused BV that is retained in your left and right teams that has not been utilized after 12 months of inactivity may be subject to a flushing revision, at Valentus Inc.'s discretion.

Rank Advancement

Any rank you achieve in a given week will be activated and paid according to that rank the following week. Any unqualified rank, beginning from the rank of Diamond IR or above, who may have lost their active weekly or monthly Diamond IR or above qualification, will be granted a grace period of 30 days in order to re-qualify and retain their Diamond IR or above rank benefits.

Disclaimer: Earning levels, ranks advancement or income may vary and are not typical. Valentus, Inc cannot guarantee any particular level or earning. We do not make guarantees about your ability to get results or earn any money with our ideas, information, tools, compensation systems or strategies. Your results are solely determined by your efforts, resources, connections, dedication and application. We do not guarantee results or future earnings, and we do not offer any legal, medical, tax or other professional advice. Any financial numbers referenced here, or on any of our websites, are educational and intended to describe how our programs work and should not be considered exact, actual or as a promise of potential earnings. All numbers are illustrative only.